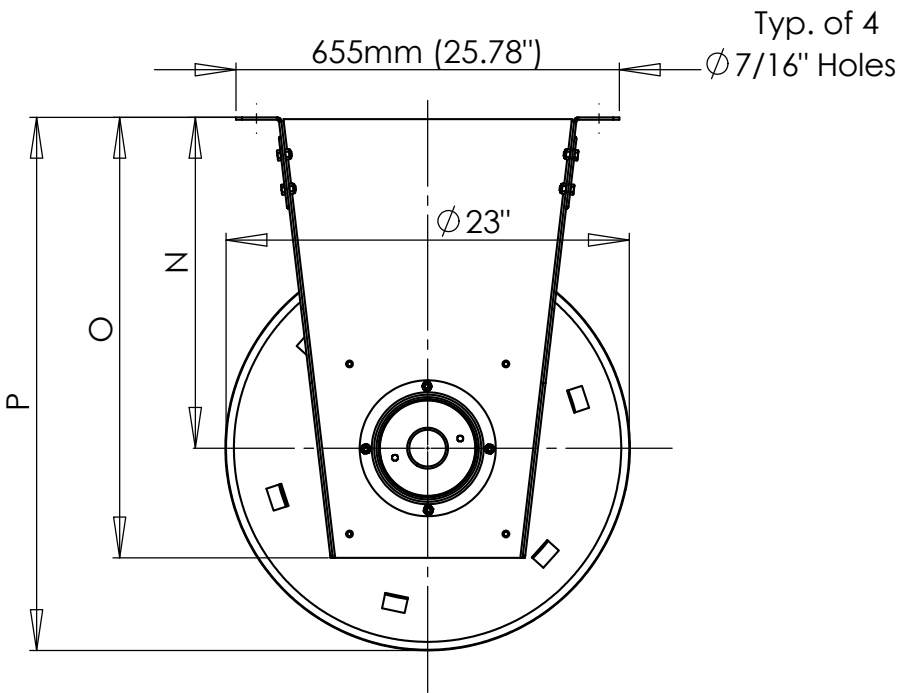


	L	M	N	O	P	Q
HRE-4-X	680mm(26.77")	775mm(30.51")	483mm(19")	635mm(25")	645mm(25.4")	160mm(6.30")
HRE-5-X	980mm(38.58")	1075mm(42.32")	483mm(19")	635mm(25")	645mm(25.4")	160mm(6.30")
HRE-6-X	980mm(38.58")	1075mm(42.32")	483mm(19")	635mm(25")	645mm(25.4")	160mm(6.30")
HRE-8-X	980mm(38.58")	1075mm(42.32")	483mm(19")	635mm(25")	645mm(25.4")	160mm(6.30")
HRE-10-X	1250mm(49.21")	1383mm(54.43")	705mm(27.8")	976mm(38.4")	1111mm(43.7")	254mm(10.00")
HRE-12-X	1250mm(49.21")	1383mm(54.43")	705mm(27.8")	976mm(38.4")	1111mm(43.7")	304.8mm(12.00")
HRE-14-X	1250mm(49.21")	1383mm(54.43")	705mm(27.8")	976mm(38.4")	1111mm(43.7")	355.6mm(14.00")

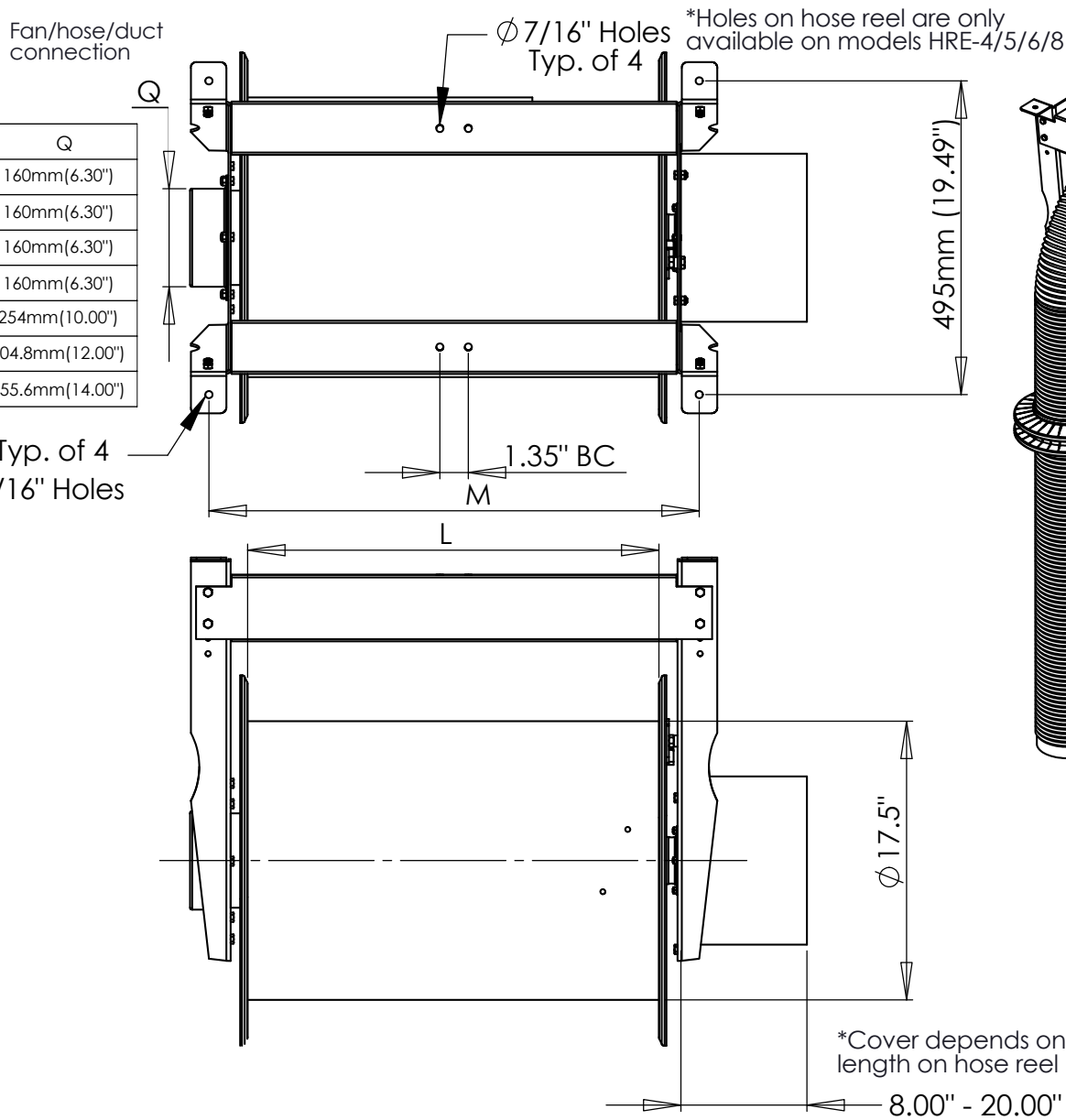


Hose Reel Specifications:

Hose Length	(FEET)
Part Number	
Description	
Hose Reel Configuration	
Quantity	

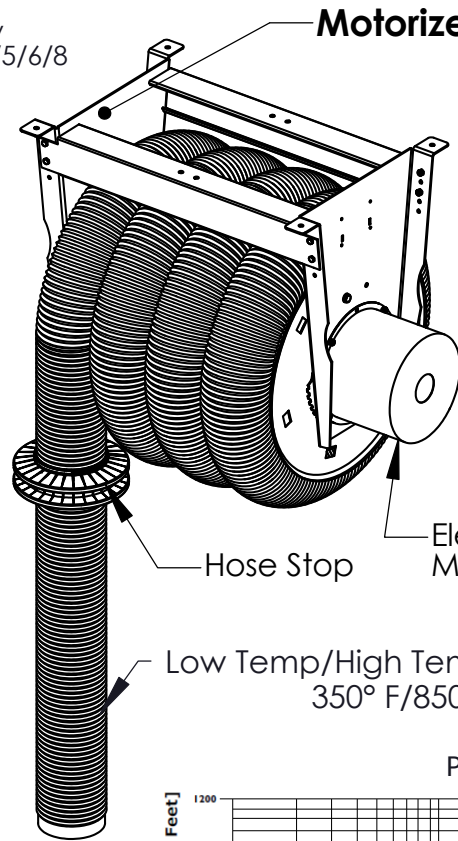
Operating Condition:

Design Velocity	(FPM)
Design Flow Rate	(CFM)
Total Pressure Drop	(INCHES)



How to Calculate:

1. Figure out hose diameter
2. Establish duct velocity/hose diameter
3. Figure out total length of hose in 100' increments (e.g. 340' of hose is 3.4')
4. Allow for an additional 40' of hose to simulate pressure loss in hose reel mechanism
5. Multiply total hose length by pressure loss found on the psychometric chart



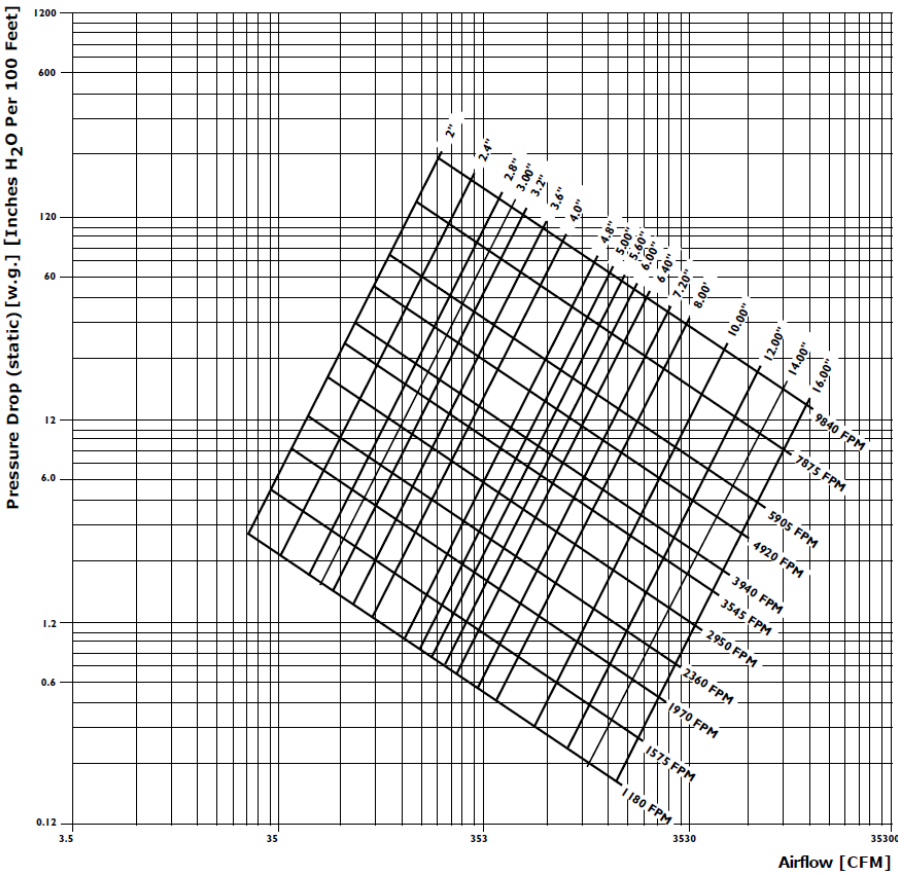
Motorized Hose Reel

*Lev-co recommends a minimum duct velocity of 3500 FPM (4500 FPM preferred) in order to meet fire code regulations for flammable gases and hose warranty.

*Lev-Co recommends that systems provide an additional 25% (minimum) cooling air into the ventilation system (Emission + 25 = total flow rate)

Low Temp/High Temp flexible hose suitable for temperatures of up to 350° F/850° F/1250° F/2000° F . Shipped separately

Pressure Losses of Hoses



14-05

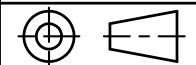
CUSTOMER:	
CUSTOMER P.O.:	
PROJECT:	
ENGINEER:	
SALES REP.:	
IDENTIFICATION / TAGGING:	

> www.lev-co.com • 1.888.862.5356

lev-co

The device depicted and described hereon embodies proprietary information owned by the manufacturer. All design, manufacturing, reproduction, sales and patent rights regarding this device or drawing reserved except where explicit right is guaranteed in writing. We reserve the right to make design changes.

Drawn by: Mark F
Date: 22/10/2021
Scale: NTS
Weight: N/A



14-05 Low Temp & High Temp
Electrical Hose Reels
Specification Drawing

Drawing No.: -
Material: -
File Name: (14-05) Electrical Hose Reel - SD-0
Sheet: 1/4

ELECTRICAL MOTOR SPECIFICATION AND PERFORMANCE

MOTOR TYPE

- Asynchronous, single phase motor – Totally enclosed
- Built-in start and run capacitors
- Safety Brake
- Silent motor
- Anti-corrosion coating for indoor, outdoor and wash-down applications
- Power-Outage crank allowing the recoil of hose during power failures
- Automatic safety cut-off when manual override (crank) is engaged
- 5 years warranty
- Limit switches protect when the hoses reach the end of their limits

MOTOR SPECIFICATIONS

TORQUE		SPEED	ELECTRICAL RATING	LIMIT SWITCH CAPACITY
IN.LBS.	MN			
530	60	14 RPM	120V / 1PH / 60HZ Amperage – 2.7 Amps @ 120V Power - 320 Watts @ 60Hz	38 Turns
530	60	12 RPM	230V / 1PH / 60HZ Amperage – 1.8 Amps @ 230V Power - 390 Watts @ 60Hz	38 Turns

*Standard Options

Chart For Maximum Hose Lengths (ft)

	Electric Hose Reel 650 mm (26") Drum Width	Electric Hose Reel 1000 mm (37") Drum Width	Electric Hose Reel 1250 mm (50") Drum Width
	Approved maximum length of hose on this hose reel	Approved maximum length of hose on this hose reel	Approved maximum length of hose on this hose reel
Part Number Pre-fix			
HRE-4-NH-(maximum hose length)	38*	55	74
HRE-5-NH-(maximum hose length)	32*	47	62
HRE-6-NH-(maximum hose length)	-	40*	54
HRE-8-NH-(maximum hose length)	-	-	42*
HRE-10-NH-(maximum hose length)	-	-	37*
HRE-12-NH-(maximum hose length)	-	-	32*
HRE-14-NH (maximum hose length)	-	-	27*

PLEASE NOTE: Allow for internal hose lengths of 2ft plus width of drum (also add any length of hose you want hanging over drum when doing final hose length calculation)

CUSTOMER:

CUSTOMER P.O.:

PROJECT:

ENGINEER:

SALES REP.:

IDENTIFICATION / TAGGING:

www.lev-co.com • 1.888.862.5356

lev-co

The device depicted and described hereon embodies proprietary information owned by the manufacturer. All design, manufacturing, reproduction, sales and patent rights regarding this device or drawing reserved except where explicit right is guaranteed in writing. We reserve the right to make design changes.

Drawn by: Mark F

Date: 22/10/2021

Scale: NTS

Weight: N/A

14-05 Low Temp & High Temp Electrical Hose Reels

Specification Drawing

Drawing No.: -

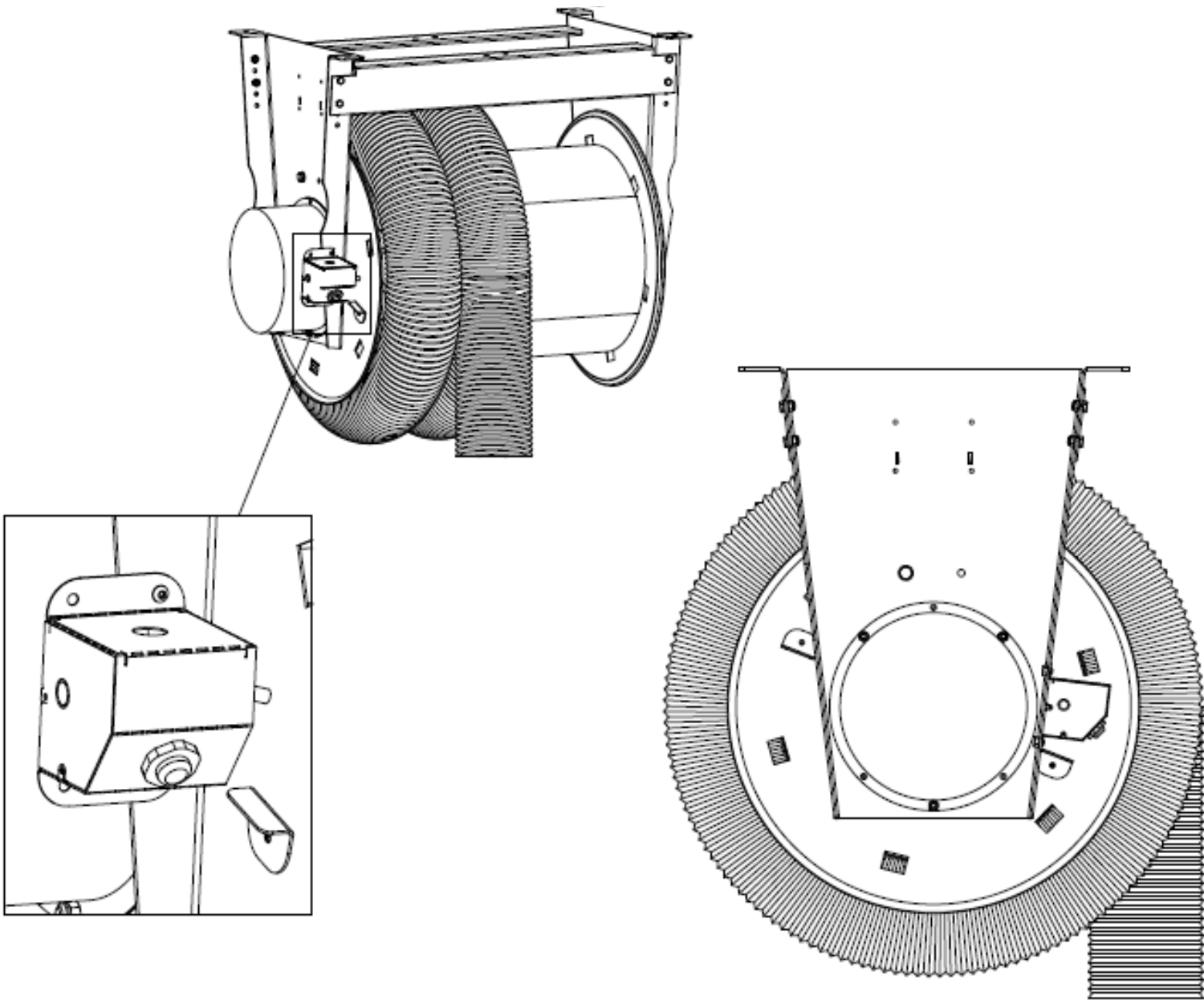
File Name: (14-05) Electrical Hose Reel - SD-0

Material: -

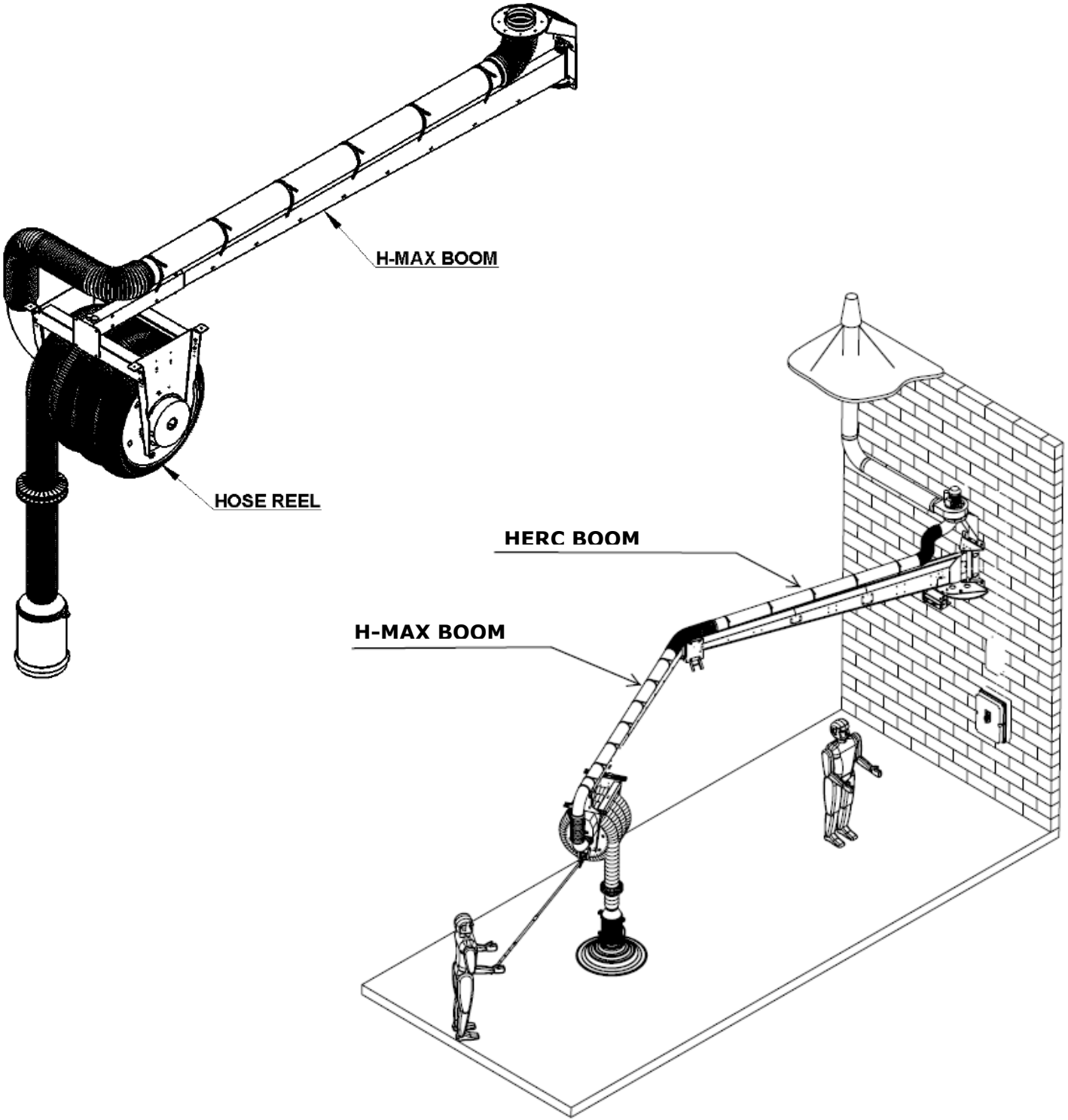
Sheet: 2/4

DUST COLLECTION • FUME EXTRACTION • OIL MIST FILTRATION • VEHICLE EXHAUST

SWITCH AND LIGHT KIT OPTION



BOOM OPTION



14-05



CUSTOMER:
CUSTOMER P.O.:
PROJECT:
ENGINEER:
SALES REP.:
IDENTIFICATION / TAGGING:



The device depicted and described hereon embodies proprietary information owned by the manufacturer. All design, manufacturing, reproduction, sales and patent rights regarding this device or drawing reserved except where explicit right is guaranteed in writing. We reserve the right to make design changes.

Drawn by:	Mark F
Date:	22/10/2021
Scale:	NTS
Weight:	N/A

14-05 Low Temp & High Temp Electrical Hose Reels	
Specification Drawing	
Drawing No.:	-
Material:	-
File Name:	(14-05) Electrical Hose Reel - SD-0
Sheet:	3/4



MODELS & OPTIONS:		Under Carriage Rubber Tailpipe Adapters c/w Vice Grip (Suitable for Round or Oval Tailpipes)		Fan Mounting Brackets				
Part #	Description							
Low Temp Hose Reel		<input type="checkbox"/>	SRF-4	4" Rubber nozzle with vice grip - 6" opening	<input type="checkbox"/>	P-033-HR	P-MAX fan mounting bracket for spring recoil hose reels.	
<input type="checkbox"/>	HRE-4-25-LT	4" Motorized Hose Reel - c/w 7.5m (25') of 250° F hose.	<input type="checkbox"/>	SRF-4/D	4" Rubber nozzle with vice grip and automatic damper - 6" opening	Sensors (when ordering main unit)		
<input type="checkbox"/>	HRE-4-33-LT	4" Motorized Hose Reel - c/w 10m (33') of 250° F hose.	<input type="checkbox"/>	SRF-5	5" Rubber nozzle with vice grip - 8" opening	Part #	Description	
<input type="checkbox"/>	HRE-5-25-LT	5" Motorized Hose Reel - c/w 7.5m (25') of 250° F hose.	<input type="checkbox"/>	SRF-5/D	5" Rubber nozzle with vice grip and automatic damper - 8" opening	<input type="checkbox"/>	MS-12-24V	Micro-switch for the automatic "Start/Stop" of the fan and/or automatic damper. C/W Switch and 24V blue 25MM "RUNNING" light.
<input type="checkbox"/>	HRE-5-33-LT	5" Motorized Hose Reel - c/w 10m (33') of 250° F hose.	<input type="checkbox"/>	SRF-6	6" Rubber nozzle with vice grip - 8" opening			
<input type="checkbox"/>	HRE-6-25-LT	6" Motorized Hose Reel - c/w 7.5m (25') of 250° F hose.	<input type="checkbox"/>	SRF-6/D	6" Rubber nozzle with vice grip and automatic damper - 8" opening			
<input type="checkbox"/>	HRE-6-33-LT	6" Motorized Hose Reel - c/w 10m (33') of 250° F hose.	Over-head Stack adapter - High Temperature Rubber					
<input type="checkbox"/>	HRE-8-33-LT	8" Motorized Hose Reel - c/w 10m (33') of 250° F hose.	<input type="checkbox"/>	RCA-4	10" Diesel Stack Adapter - 4" opening for exhaust pipe			
<input type="checkbox"/>	HRE-8-25-LT	8" Motorized Hose Reel - c/w 7.5m (25') of 250° F hose.	<input type="checkbox"/>	RCA-4/D	10" Diesel Stack Adapter w/ manual damper - 4" opening for exhaust pipe			
<input type="checkbox"/>	HRE-10-25-LT	10" Motorized Hose Reel - c/w 7.5m (25') of 250° F hose.	<input type="checkbox"/>	RCA-5	10" Diesel Stack Adapter - 5" opening for exhaust pipe			
<input type="checkbox"/>	HRE-10-33-LT	10" Motorized Hose Reel - c/w 10m (33') of 250° F hose.	<input type="checkbox"/>	RCA-5/D	10" Diesel Stack Adapter w/ manual damper - 5" opening for exhaust pipe			
<input type="checkbox"/>	HRE-12-25-LT	12" Motorized Hose Reel - c/w 7.5m (25') of 250° F hose.	<input type="checkbox"/>	RCA-6	10" Diesel Stack Adapter - 6" opening for exhaust pipe			
<input type="checkbox"/>	HRE-12-30-LT	12" Motorized Hose Reel - c/w 9m (30') of 250° F hose.	<input type="checkbox"/>	RCA-6/D	10" Diesel Stack Adapter w/ manual damper - 6" opening for exhaust pipe			
<input type="checkbox"/>	HRE-14-25-LT	14" Motorized Hose Reel - c/w 7.5m (25') of 250° F hose.	<input type="checkbox"/>	RCA-8	10" Diesel Stack Adapter - 8" opening for exhaust pipe			
<input type="checkbox"/>	HRE-14-30-LT	14" Motorized Hose Reel - c/w 9m (30') of 250° F hose.	<input type="checkbox"/>	RCA-8/D	10" Diesel Stack Adapter w/ manual damper - 8" opening for exhaust pipe			
High Temp Hose Reel			<input type="checkbox"/>	RCA-10	10" Diesel Stack Adapter - 10" opening for exhaust pipe			
<input type="checkbox"/>	HRE-4-25-HT	4" Motorized Hose Reel - c/w 7.5m (25') of 600° F or 850° F hose.	<input type="checkbox"/>	RCA-12	10" Diesel Stack Adapter - 12" opening for exhaust pipe			
<input type="checkbox"/>	HRE-4-33-HT	4" Motorized Hose Reel - c/w 10m (33') of 600° F or 850° F hose.	<input type="checkbox"/>	RCA-12/D	10" Diesel Stack Adapter w/ manual damper - 14" opening for exhaust pipe			
<input type="checkbox"/>	HRE-5-25-HT	5" Motorized Hose Reel - c/w 7.5m (25') of 600° F or 850° F hose.	<input type="checkbox"/>	RCA-14	10" Diesel Stack Adapter - 14" opening for exhaust pipe			
<input type="checkbox"/>	HRE-5-33-HT	5" Motorized Hose Reel - c/w 10m (33') of 600° F or 850° F hose.	<input type="checkbox"/>	TP-6-12	6' - 12' Telescoping Pole			
<input type="checkbox"/>	HRE-6-25-HT	6" Motorized Hose Reel - c/w 7.5m (25') of 600° F or 850° F hose.	Automatic Motor Starter					
<input type="checkbox"/>	HRE-6-33-HT	6" Motorized Hose Reel - c/w 10m (33') of 600° F or 850° F hose.	<input type="checkbox"/>	P-025-24S-120V-1PH-2.0 HP	Energy Saver E- Man© 115V/1/60. Fan Motor control station. Rated up to 2 HP. Permits automatic start-stop of the fan from the extractor arm hood, hose reel or other device with Remote Switch. Remote mounted switches must be ordered separately(EG: LS-12 -			
<input type="checkbox"/>	HRE-6-41-HT	6" Motorized Hose Reel - c/w 12.5m (41') of 600° F or 850° F hose.	<input type="checkbox"/>	P-025-24S-208/230V-3PH-7.5 HP	Energy Saver E- Man© 208-230V/3/60. Fan Motor control station. Rated up to 7.5 HP. Permits automatic start-stop of the fan from the extractor arm hood, hose reel or other device with Remote Switch. Remote mounted switches must be ordered separately (EG: L			
<input type="checkbox"/>	HRE-8-25-HT	8" Motorized Hose Reel - c/w 7.5m (25') of 600° F or 850° F hose.	<input type="checkbox"/>	P-025-24S-240V-1PH-3HP	Energy Saver E- Man© 240V/1/60. Fan Motor control station. Rated up to 3 HP. Permits automatic start-stop of the fan from the extractor arm hood, hose reel or other device with Remote Switch. Remote mounted switches must be ordered separately (EG: LS-12 -			
<input type="checkbox"/>	HRE-8-41-HT	8" Motorized Hose Reel - c/w 12.5m (41') of 600° F or 850° F hose.	<input type="checkbox"/>	P-025-24S-460V-3PH-20HP	Energy Saver E- Man© 460V/3/60. Fan Motor control station. Rated up to 20 HP. Permits automatic start-stop of the fan from the extractor arm hood, hose reel or other device with Remote Switch. Remote mounted switches must be ordered separately (EG: LS-12			
<input type="checkbox"/>	HRE-10-25-HT	10" Motorized Hose Reel - c/w 7.5m (25') of 850° F or 1200° F hose.	<input type="checkbox"/>	P-025-24S-575V-3PH-20HP	Energy Saver E- Man© 575V/3/60. Fan Motor control station. Rated up to 20 HP. Permits automatic start-stop of the fan from the extractor arm hood, hose reel or other device with Remote Switch. Remote mounted switches must be ordered separately (EG: LS-12			
<input type="checkbox"/>	HRE-10-33-HT	10" Motorized Hose Reel - c/w 10m (33') of 850° F or 1200° F hose.						
<input type="checkbox"/>	HRE-12-25-HT	12" Motorized Hose Reel - c/w 7.5m (25') of 850° F or 1200° F hose.						
<input type="checkbox"/>	HRE-12-30-HT	12" Motorized Hose Reel - c/w 9m (30') of 850° F or 1200° F hose.						
<input type="checkbox"/>	HRE-14-25-HT	14" Motorized Hose Reel - c/w 7.5m (25') of 850° F or 1200° F hose.						
<input type="checkbox"/>	HRE-14-30-HT	14" Motorized Hose Reel - c/w 9m (30') of 850° F or 1200° F hose.						
Misc. Options (when ordering main unit)								
<input type="checkbox"/>	HRE-RCWS	Remote transmitter with Convenient push button control for motorized hose reel, blue in colour. Use in conjunction with part HRE-RM-RCVR						
<input type="checkbox"/>	HRE-RM-RCVR	Universal RTS receiver for motorized hose reel.						
<input type="checkbox"/>	HRE-WLWS	Wireless wall switch for motorized hose reel, black in colour with built in Radio Technology.						
<input type="checkbox"/>	HRE-WPC	Low voltage pendant controller suspended from drop cord.						
<input type="checkbox"/>	HRE-WWS	Wired Momentary rocker switch kit with standard plate white in colour. Kit contains switch and switchplate. Field installation required - Not included in price						
Horizontal boom extensions (Optional)								
<input type="checkbox"/>	H-MAX-HR-1	2m (6.5') H-MAX Boom Kit for Hose Reel. Please specify duct when ordering	<input type="checkbox"/>	MD-530-100-100	4" Ø Bridge Clamp. Clamping range of 100mm-120mm			
<input type="checkbox"/>	H-MAX-HR-2	3m (10') H-MAX Boom Kit for Hose Reel	<input type="checkbox"/>	MD-530-125-100	5" Ø Bridge Clamp. Clamping range of 120mm-140mm			
<input type="checkbox"/>	H-MAX-HR-3	4m (13') H-MAX Boom Kit for Hose Reel	<input type="checkbox"/>	MD-530-150-100	6" Ø Bridge Clamp. Clamping range of 150mm-170mm			
<input type="checkbox"/>	P-190	4.5m (15') HERCULIAN Articulating Extension Boom	<input type="checkbox"/>	MD-530-200-100	8" Ø Bridge Clamp. Clamping range of 200mm-220mm			
<input type="checkbox"/>	P-194	2m (6.5') HERCULIAN Articulating Extension Boom c/w hose	<input type="checkbox"/>	MD-530-250-100	10" Ø Bridge Clamp. Clamping range of 100mm-120mm			
<input type="checkbox"/>	P-195	3m (10') HERCULIAN Articulating Extension Boom c/w hose	<input type="checkbox"/>	MD-530-300-100	12" Ø Bridge Clamp. Clamping range of 120mm-140mm			
			<input type="checkbox"/>	MD-530-350-100	14" Ø Bridge Clamp. Clamping range of 150mm-170mm			
CUSTOMER:				The device depicted and described hereon embodies proprietary information owned by the manufacturer. All design, manufacturing, reproduction, sales and patent rights regarding this device or drawing reserved except where explicit right is guaranteed in writing. We reserve the right to make design changes.		14-05 Low Temp & High Temp Electrical Hose Reels		
CUSTOMER P.O.:				Drawn by: Mark F		Specification Drawing		
PROJECT:				Date: 22/10/2021		Drawing No.: -		
ENGINEER:				Scale: NTS		File Name: (14-05) Electrical Hose Reel -		
SALES REP.:				Weight: N/A		Material: -		
IDENTIFICATION / TAGGING:						Sheet: 4/4		
DUST COLLECTION • FUME EXTRACTION • OIL MIST FILTRATION • VEHICLE EXHAUST								